

JVC

SCHEMATIC DIAGRAMS

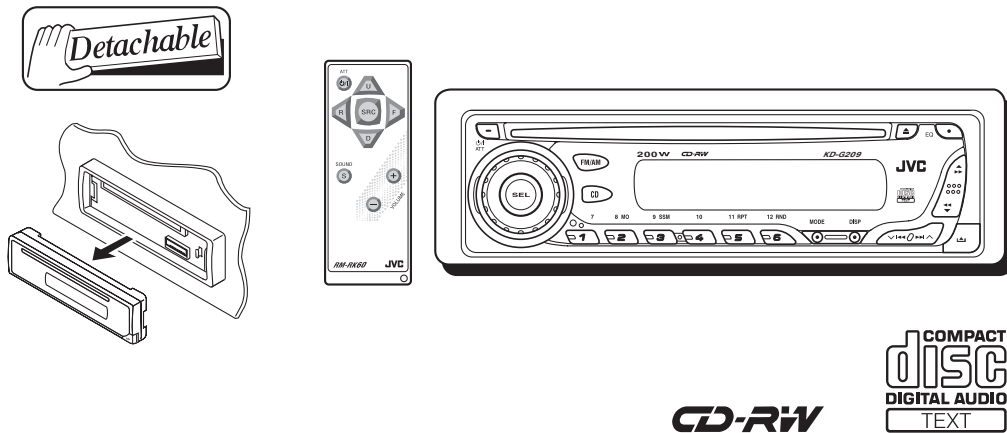
CD RECEIVER

KD-G209

CD-ROM No.SML200405

Area suffix

UR ----- Brazil



Contents

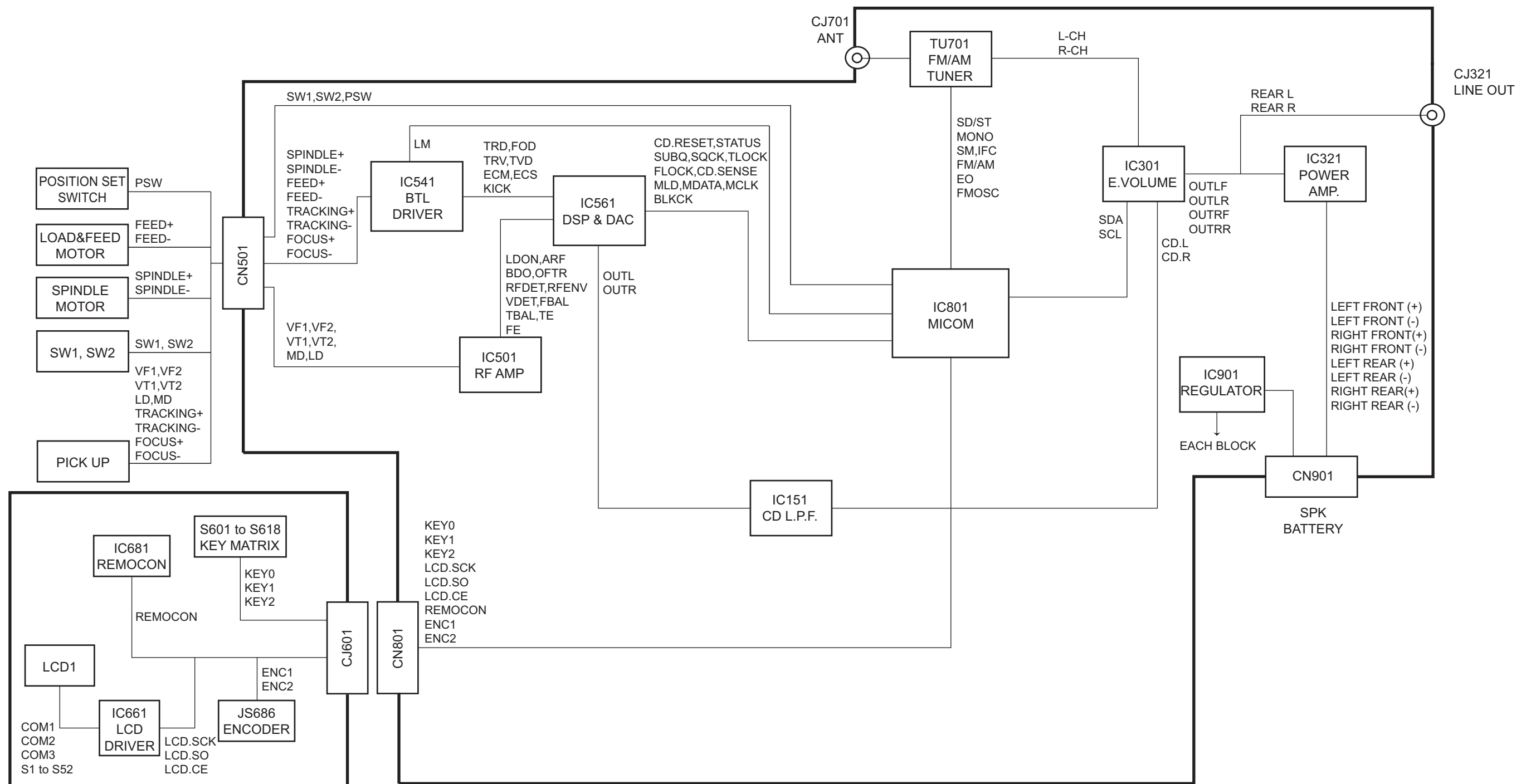
Block diagram	2-1
Standard schematic diagrams	2-2
Printed circuit boards	2-5, 6

Safety precaution

 **CAUTION** Burrs formed during molding may be left over on some parts of the chassis. Therefore, pay attention to such burrs in the case of performing repair of this system.

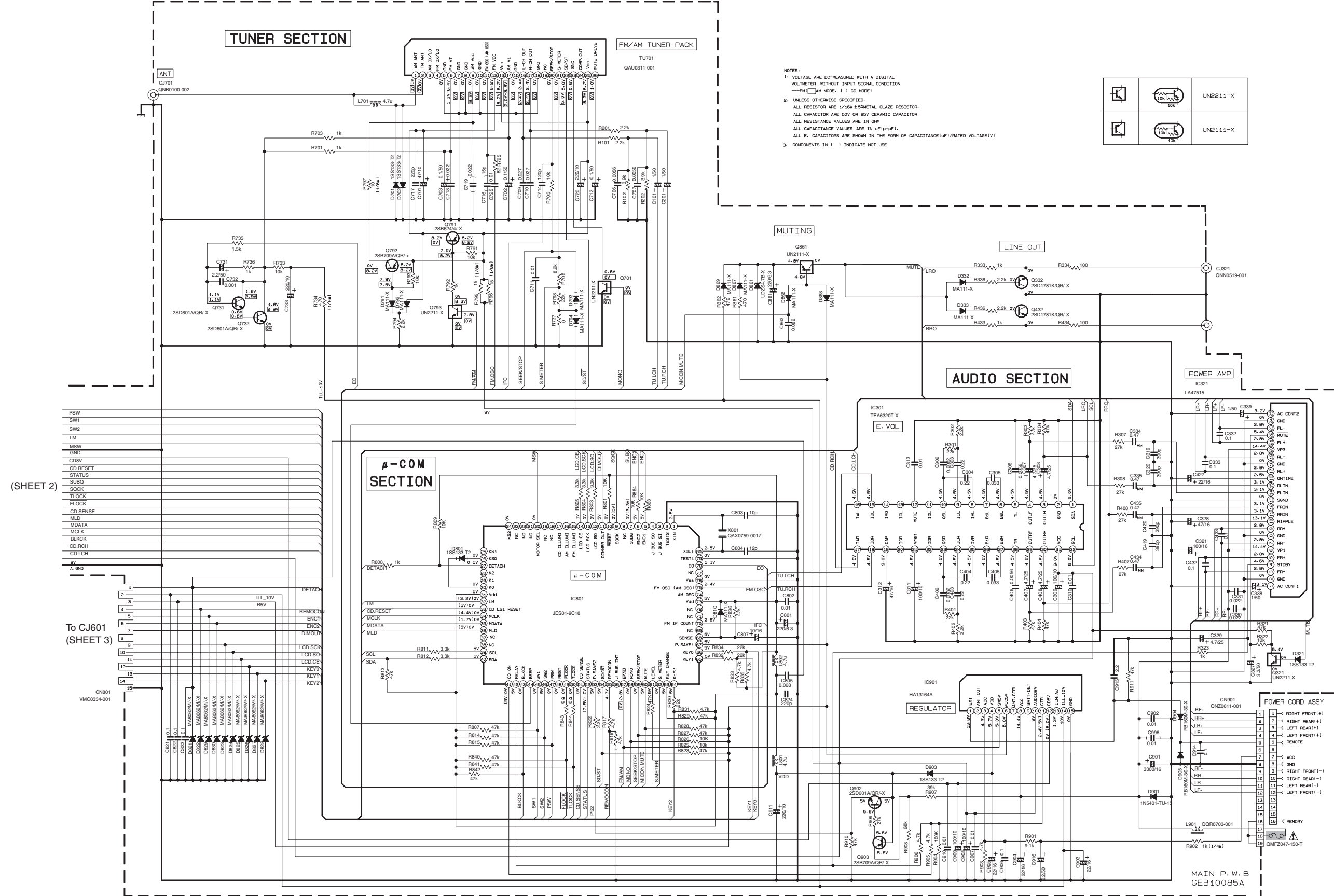
 **CAUTION** Please use enough caution not to see the beam directly or touch it in case of an adjustment or operation check.

Block diagram



Standard schematic diagrams

■ Main amplifier section



- NOTES:
- VOLTAGE ARE DC-MEASURED WITH A DIGITAL VOLTMETER WITHOUT INPUT SIGNAL CONDITION
—FM MODE: () CD MODE
 - UNLESS OTHERWISE SPECIFIED
ALL RESISTOR ARE 1/16W ±5% METAL GLAZE RESISTOR.
ALL CAPACITOR ARE 50V OR 25V CERAMIC CAPACITOR.
ALL RESISTANCE VALUES ARE IN OHM
ALL CAPACITANCE VALUES ARE IN μF (pF/10³)
ALL E. CAPACITORS ARE SHOWN IN THE FORM OF CAPACITANCE (μF/RATED VOLTAGE (V))
 - COMPONENTS IN () INDICATE NOT USE

		UN2211-X
		UN2111-X

- PSW
- SW1
- SW2
- LM
- MSW
- GND
- CD BV
- CD RESET
- STATUS
- SUBO
- SOCK
- TLOCK
- FLOCK
- CD SENSE
- MLD
- MDATA
- MCLK
- BLKCK
- CD RCH
- CD LCH
- 5V
- A-GND

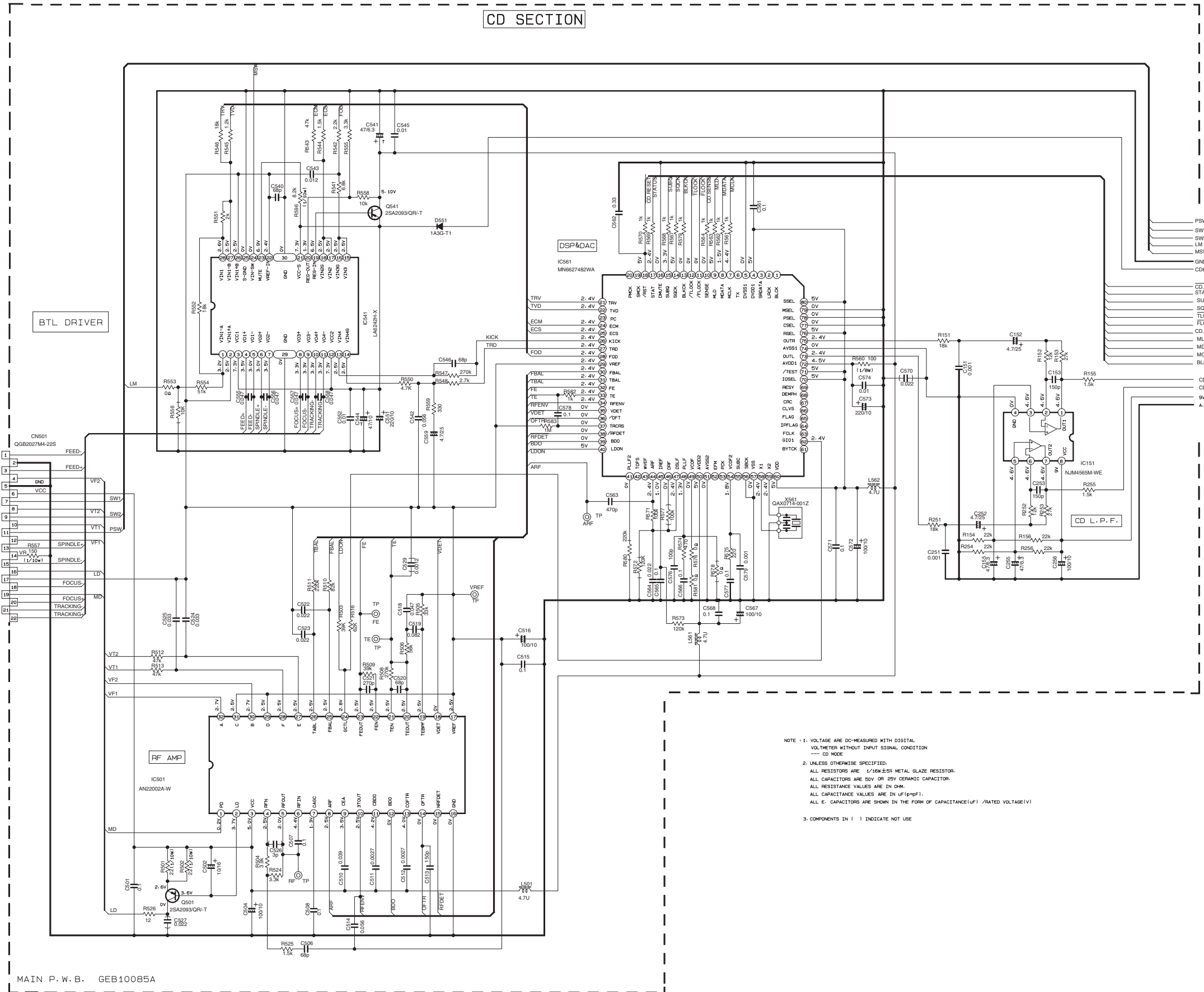
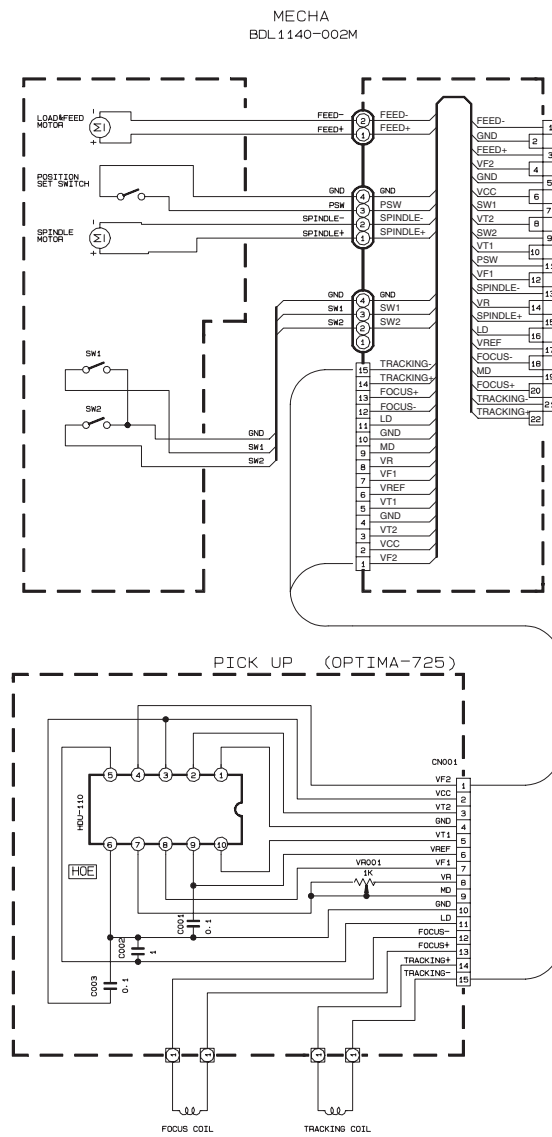
(SHEET 2)

To CJ601 (SHEET 3)

CN801 VMC0334-001

▲ Parts are safety assurance parts. When replacing those parts make sure to use the specified one.

CD SECTION



NOTE 1. VOLTAGE ARE DC-MEASURED WITH DIGITAL VOLT-METER WITHOUT INPUT SIGNAL CONDITION
--- CD MODE

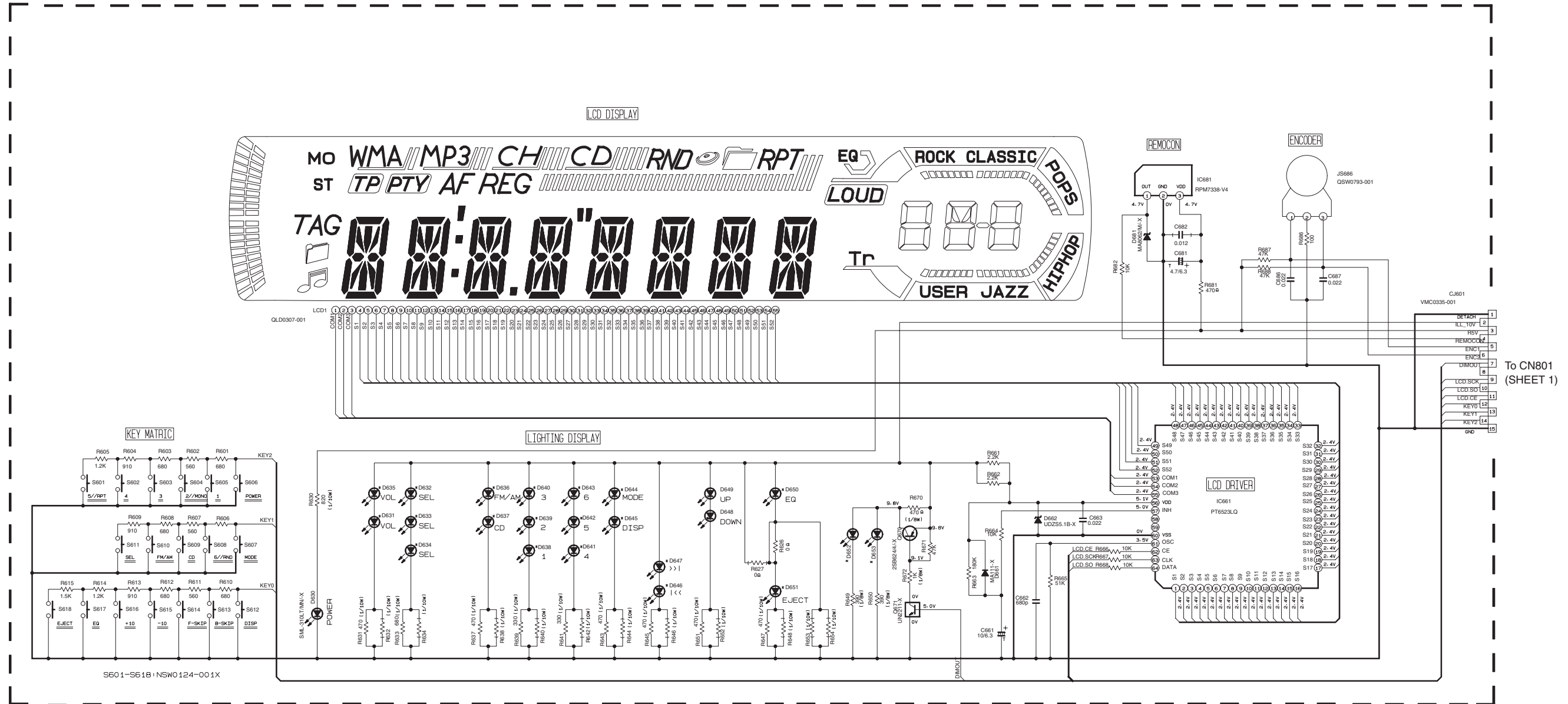
2. UNLESS OTHERWISE SPECIFIED:
ALL RESISTORS ARE 1/16W±5% METAL GLAZE RESISTOR.
ALL CAPACITORS ARE 50V OR 25V CERAMIC CAPACITOR.
ALL RESISTANCE VALUES ARE IN OHM.
ALL CAPACITANCE VALUES ARE IN uF(p-pF).
ALL E. CAPACITORS ARE SHOWN IN THE FORM OF CAPACITANCE(uF) /RATED VOLTAGE(V)

3. COMPONENTS IN () INDICATE NOT USE

- PSW
- SW1
- SW2
- LM
- MSW
- GND
- CDEV
- CD RESET
- STATUS
- SUBO
- TLOCK
- FLOCK
- CD.SENSE
- MLD
- MDATA
- MCLK
- BLKCK
- CD.RCH
- CD.LCH
- 5V
- A. GND

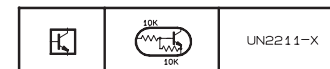
(SHEET 1)

■ LCD & Key control section



SW PWB: GEB10100A

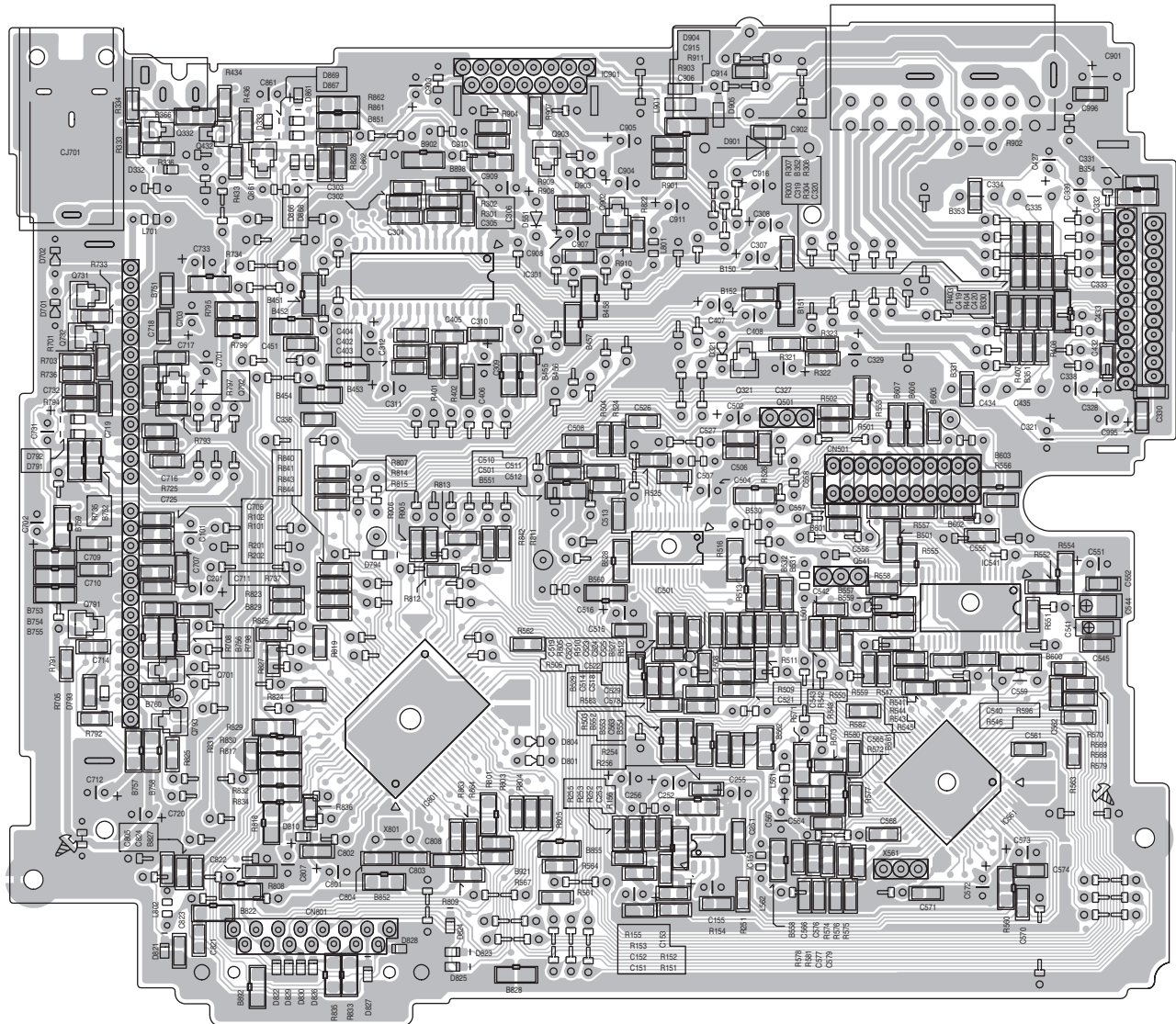
*REMARKS	REF. NO.	PART NO.
	D631-D635, D636-D640, D641-D645	SML-310VT/JK/-X
FM/AM & CD	D636, D637	LNJ308G81/1-3/X
MODE & DISP	D644, D645	SML-310VT/JK/-X
BACK LIGHT	D652, D653	NSPW310BS/BRS



- NOTES
- VOLTAGES ARE DC-MEASURED WITH A DIGITAL VOLT METER WITHOUT INPUT SIGNAL.
 - UNLESS OTHERWISE SPECIFIED.
ALL RESISTORS ARE 1/16W ±5% METAL GLAZE RESISTOR.
ALL CAPACITORS ARE 50V OR 25V CERAMIC CAPACITOR.
ALL RESISTANCE VALUES ARE IN OHM.
ALL CAPACITANCE VALUES ARE IN uF (p=pF)
ALL E-CAPACITORS ARE SHOWN IN THE FORM OF CAPACITANCE(uF)/RATED VOLTAGE(V)
T --- TANTALUM CAPACITOR.
 - COMPONENTS IN () INDICATE NOT USE.

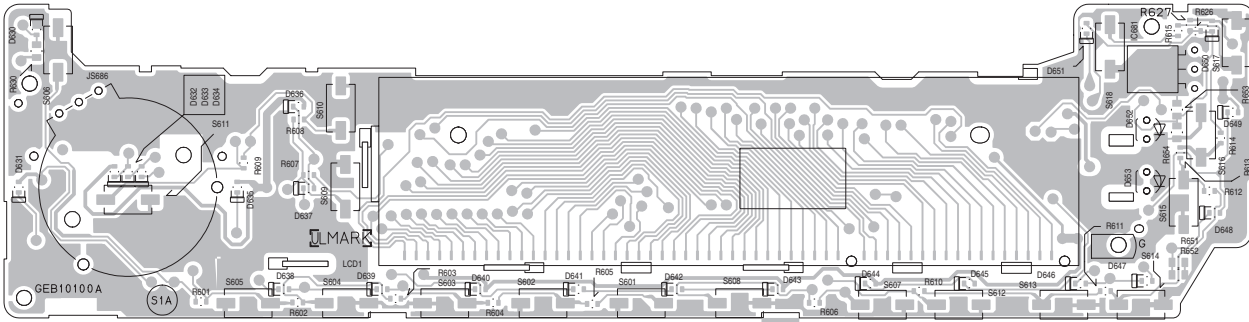
Printed circuit boards

■ Main board

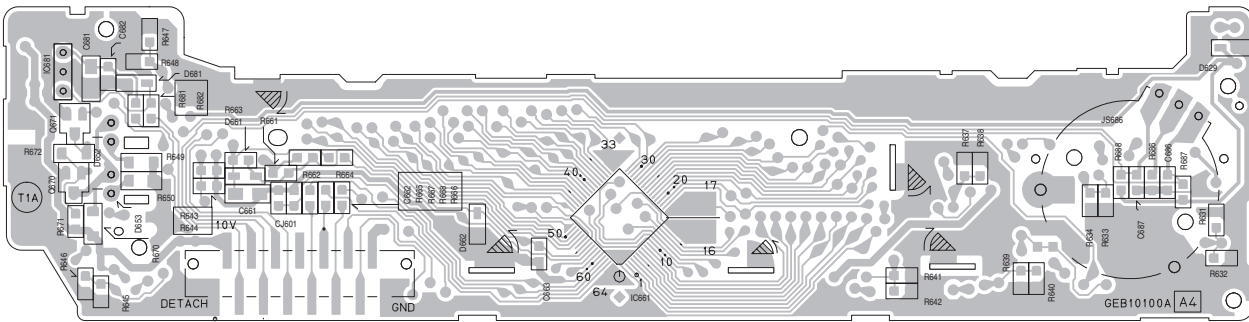


■ Front board

Forward side



Reverse side



< MEMO >

JVC

VICTOR COMPANY OF JAPAN, LIMITED

AV & MULTIMEDIA COMPANY CAR ELECTRONICS CATEGORY 10-1,1chome,Ohwatari-machi,Maebashi-city,371-8543,Japan

(No.MA071SCH)



Printed in Japan
WPC